



WorldGBC ERN Policy Task Force

9 August 2024

Agenda

- **Introductions (5)**
- **Global Policy (10)**
 - **Buildings Breakthrough and NDC scorecard**
- **European Policy Update (15)**
 - **Reelection of VDL and Parliamentary Committees**
 - **Overview of the rest of the year**
- **EPBD implementation toolkit (10)**
 - **Preview of factsheets**
 - **Summary of other forthcoming materials**
- **New European Bauhaus Facility consultation summary of draft feedback (20)**
- **National policy updates (25)**
- **Close and next steps (5)**

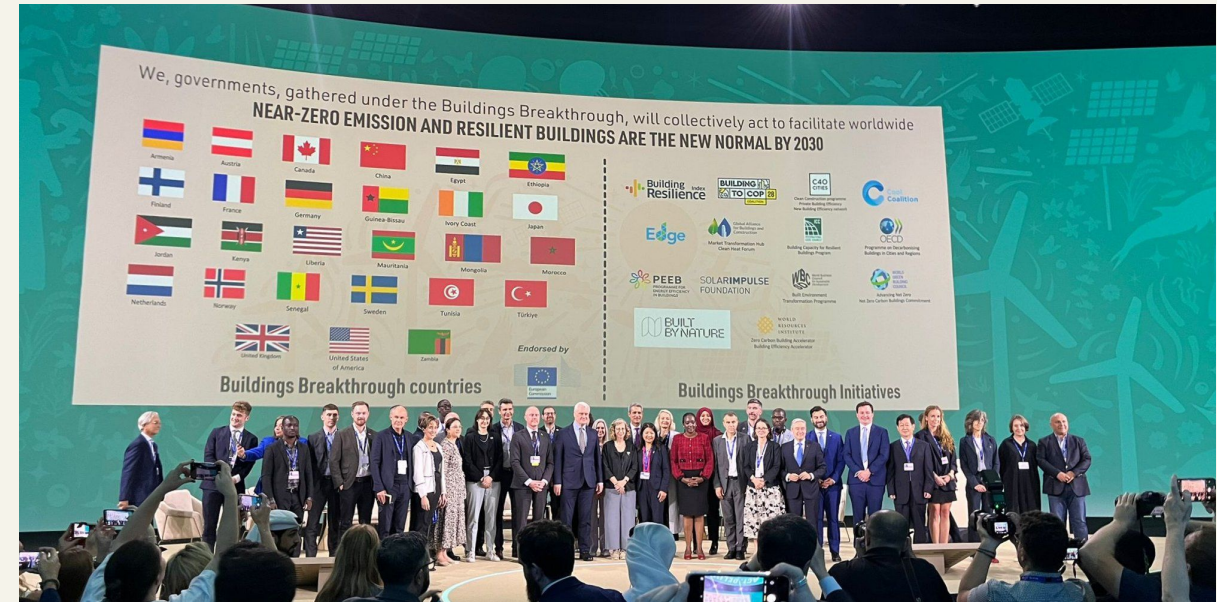
Buildings Breakthrough and NDC scorecard

Buildings Breakthrough

The Buildings Breakthrough was launched at COP28 in Dubai with the endorsement of the 28 member countries, as well as the support of the European Commission.

It is co-led by France and the Kingdom of Morocco, the initiative will provide a platform for delivering international priorities towards the goal statement *“Near-zero emission and resilient buildings are the new normal by 2030”*.

UNEP–GlobalABC have been appointed as facilitators of the BB, working to coordinate and deliver on the recommendations of the Secretariat (International Energy Agency, IEA and the High-Level Climate Champions, HLCC).



Buildings Breakthrough

Progress and next steps:

- *First call of Steering Committee 8 August*

Potential Deliverables

- *Agreeing a glossary of key terms*
- *Common principles for Near Zero and Resilient Buildings*
 - *Solutions based*
 - *Performance based*
 - *Action based*

What? A Sustainable Buildings Scorecard for NDCs and Policies'

- WorldGBC alongside 5 'pilot' GBCs will develop a '*Sustainable Buildings Scorecard and Action Plan for NDCs and Policies*'.
- The development of this Scorecard will enable WorldGBC network of GBCs and wider stakeholders to support governments in strengthening their NDCs using a top-down and bottom up approach that builds on existing national/ local policies whilst facilitating a gap analysis between these policies against ambition in NDCs (and vice versa).

This process will:

- Identify best practice building policies that should be in the revised NDCs and integrated into national buildings regulatory frameworks
- Create ownership and buy-in of local stakeholders and increase the chance of success for better policy outcomes and ambition in NDCs
- Prepare and engage market political actors to participate in a wider process to develop a national decarbonisation roadmap with GBCs as facilitators

Project Outputs

Sustainable Buildings Scorecard for NDCs and Policies: Flagship output to be launched in Q4 2024 that will enable GBCs to support governments to develop ambitious NDCs that reflect the true mitigation and adaptation potential of buildings in a holistic manner.

Tailored Action Plan for Pilot GBCs: That maps the key actions to progress with checklist of policy recommendations for each country.

Capacity Building: WorldGBC hosted workshops with the regional networks and GBCs where best practice learnings from projects such as BuildingLife can be shared to ensure that the Scorecard outputs can support the development of curated policy recommendation at the national level. Potential to also leverage Scorecard to develop roadmaps and identify areas where technical assistance is needed.

Global communications and advocacy campaign: a strong communications narrative ahead of COP29 and COP30 calling for coordinated action on buildings which provides the political will for political leaders in the pilot countries to commit to next steps on their policy recommendations and encourages government in non pilot countries to work with their GBCs on the scorecard.





Any
Questions?

European Policy Update

Reelection of VDL and Parliamentary Committees

Ursula von der Leyen reelected

- Von der Leyen's re-election has been confirmed, maintaining the centrist alliance with the support of the Greens.
- VDL has also called for a Commissioner to oversee the topic of housing, indicating that she wants to make this more of a priority topic for EU institutions in the new Commission term.
- Von der Leyen and EU countries will now propose candidates for new Commissioners. Parliament will organise hearings of the Commissioner-designate so that MEPs from parliament committees can assess the suitability of candidates for proposed portfolios
- The process in Parliament will finish with a plenary vote, expected in the autumn, where MEPs will have to decide whether to approve the composition of the Commission as a whole.



Parliamentary committee chair and vice-chairs announced

The European Parliamentary Committees for the Environment (ENVI) and Industry, Research and Energy (ITRE) have elected their chairs and coordinators for the period 2024–2027.

ITRE Committee

Chair: Borys Budka (EPP, Poland)

First Vice-Chair: Tsvetelina Penkova (S&D, Bulgaria)

Second Vice-Chair: Elena Donazzan (ECR, Italy)

Third Vice-Chair: Giorgio Gori (S&D, Italy)

Fourth Vice-Chair: Yvan Verougstraete (Renew, Belgium)

ENVI Committee

Chair: Antonio Decaro (S&D, Italy)

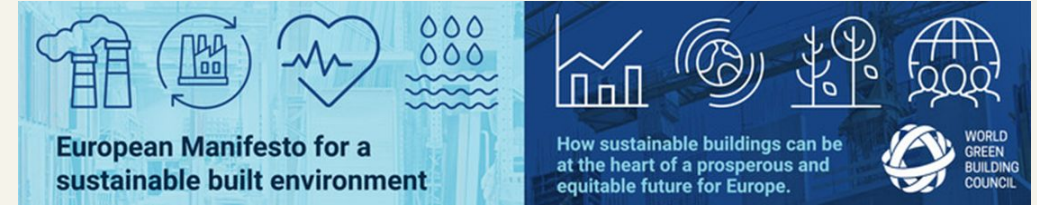
First Vice-Chair: Esther Herranz Garcia (EPP, Spain)

Second Vice-Chair: Pietro Fiocchi (ECR, Italy)

Third Vice-Chair: Anja Hazekamp (The Left, Netherlands)

Fourth Vice-Chair: András Tivadar Kulja (EPP, Hungary)

WorldGBC European Manifesto



Key opportunities upcoming include:

- End of summer recess: sharing the European Manifesto with ITRE and ENVI chairs and vice chairs
- Election of Commissioners (autumn)
- Von der Leyen issues mission letters to Commissioners (Nov/Dec)
 - Sharing Manifesto recommendations with VDL cabinet
- New Commission takes office (December)
- 2025 Commission work programme (Q4 2024/Q1 2025)

Working with comms and PR agency on pitching to media using European Manifesto

European Policy Update

Overview of the rest of the year

Overview for the rest of 2024

August 2024

- 14 August – Launch of EPBD factsheets

September 2024

- 17th – Deadline for submission of feedback to New European Bauhaus Facility consultation.
- 23rd – Built4People stakeholder forum in Luxembourg
- 30th – first draft of WLC implementation position paper

October 2024

- 1-2nd – ERN meeting in Copenhagen
- Tbc – launch of EU policy tracker and case study reports

Overview for the rest of 2024 (cont.)

October 2024

- 15th – second draft of WLC implementation position paper for red flag review
- Tbc – National Building Policy Working Group call
- Tbc – Commission expected to engage with stakeholders on EPBD Delegated Act

November 2024

- Tbc – New Commission takes office

December 2024

- w/c 2 December – potential launch of WLC implementation position paper

Any other important dates missing from this list?

EPBD implementation toolkits

EPBD factsheets

EPBD factsheets on MEPS and life-cycle GWP



WorldGBC has developed these factsheets to assist the network with their advocacy work with national governments to implement key measures outlined in the EPBD.

They are also intended to serve as an educational resource for the wider industry.

WorldGBC will share a Dropbox link to a comms pack later today containing:

- Designed factsheets x2
- Editable factsheets for translation
- Social media cards and suggested posts
- Powerpoints based on contents of the factsheets

The Energy Performance in Buildings Directive

The EPBD, the EU's primary law governing the sustainability of buildings, has undergone a new revision which was finalised in 2024. This change to the EPBD is intended to help Europe achieve a fully decarbonised building stock by 2050, as part of the EU's wider target of climate neutrality by 2050.

Member States have until May 2026 to transpose the provisions of the updated EPBD.

For the first time, the EPBD includes measures that address the life cycle GWP of buildings across the EU.

The factsheets will go live on 14 August at 10am BST

Guidelines for using the EPBD factsheets

1. Compile list of contacts in relevant govt. departments
2. Research provisions in the existing national policy framework related to renovation, EPCs, minimum energy performance standards and life-cycle GWP.
3. Based on this research identify where gaps exist in national policy for the implementation of EPBD measures around MEPS and life-cycle GWP.
4. Contact government and civil service representatives to introduce yourself and to set up an introductory call around EPBD implementation.
5. Use the call to introduce your network and present on the factsheets and our recommendations for implementation steps. Share the full factsheets in a follow-up email.
6. Explore further potential collaboration with the government, including any forthcoming industry consultations, working groups, and workshops on EPBD implementation.

EPBD implementation toolkit

Timeline for other forthcoming materials

EPBD implementation toolkit

Factsheets on WLC and MEPS (to be launched 14 August)

- Comms pack with visuals and slides

Case study reports (planned for October 2024)

- WLC report based on interviews with DK, FR, London and SWE governments
- MEPS report will be based on interviews with Flanders and Netherlands governments

EU policy tracker (planned for October 2024)

- Developing a concept note for a designer/web developer

WLC position paper (planned for December 2024)

- Will look at stakeholder engagement, data collection and compliance

Taxonomy WLC limit values paper (Planned for December 2024)



New European Bauhaus

NEB facility consultation response



New European Bauhaus consultation



The European Commission has launched a consultation on the New European Bauhaus Facility, which will fund projects aligned with the NEB via Horizon Europe funding

Through R&I of 120 million euros per year from 2025–27 and rollout across different programmes the NEB facility aims to:

- (1) Enhance local social acceptance of the green transition
- (2) Provide solutions for the green transition in the built environment;
- (3) Explore new business models that maintain the competitiveness of the construction sector while implementing green solutions.

Of particular relevance is focus area 2 on “Circular and regenerative approaches for the built environment”

WorldGBC has developed a draft response to the consultation which it will circulate with the network next week.

The consultation runs until 17 September

New European Bauhaus Facility consultation

In WorldGBC's draft response we have aligned our answers to positions already expressed in:

- European Manifesto
- EU Policy WLC Roadmap
- WLC policy briefing

The response also references the wider work of the Circular Buildings Coalition, of which WorldGBC is a lead partner (with WBCSD, Arup and the Ellen MacArthur Foundation).

There are a number of questions we have not chosen to engage with based on the fact that our network does not have a defined position on this topic, or if the topic is out of the scope of our network, or refers to specific construction materials.

We will outline some of the key questions and how we approached them in this presentation.

Research and Innovation component of the NEB facility

Focus area 1: 'Connecting the green transformation, social inclusion and local democracy'

We found that the questions in this section to be primarily out of scope for our network, however one of the final questions offered an opportunity to contribute:

Are there any other topics you see as necessary under this Destination?

- Coordination between Member States to avoid human rights abuses and criminal activity such as:
 - Unacceptable working conditions
 - Modern slavery
 - Fraud and corruption
- Measures to address this could include:
 - Mandatory checks via the Corporate Sustainability Due Diligence Directive (CSDDD) or similar legislation
 - A limit on the number of subcontractor tiers.

Research and Innovation component of the NEB facility

Focus area 2: 'Circular and regenerative approaches for the built environment'

We found opportunities to contribute to multiple questions in this section and suggest research topics, linked to previous circularity recommendations and work from WorldGBC and the ERN.

1. Designs for modular, adaptable and multi-purpose buildings and public spaces

- We reference Circular Building Coalition research on the impact of modular designs and transforming spaces

3. Better collection, structuring, processing and use of data to increase circularity in buildings

Harmonise calculation methods, including verification and monitoring obligations, for accounting of recycled and reused materials and investigating policy measures such as:

- National level building circularity roadmaps in the WFD
- Securing standardised system of product passports which builds on CPR requirements
- Material reduction thresholds in the EU Taxonomy in line with the Level(s) Framework

Research and Innovation component of the NEB facility

Focus area 2: 'Circular and regenerative approaches for the built environment'

We found opportunities to contribute to multiple questions in this section and suggest research topics, linked to previous circularity recommendations and work from WorldGBC and the ERN.

8. Regenerative designs for buildings and public spaces

- Holistic and neutral guidance on how measures across a building's lifecycle can support health, mental and physical wellbeing (referencing WorldGBC HWB framework)
- Drawing on biodiversity recommendations from European Manifesto

Are there any other topics you see as necessary under this Destination?

Research and innovation action will be key to supporting the EU's decarbonisation goals and those of the New European Bauhaus Facility. However, we would recommend that research and innovation action is not limited to any particular types of construction materials or products, recognising that all materials have a vital role to play in this transition towards an energy-efficient, regenerative and just transition in the built environment.

Research and Innovation component of the NEB facility

Focus area 3: 'Innovative funding and new business models for the built environment'

We found opportunities to contribute to multiple questions in this section and suggest research topics, linked to previous circularity recommendations and work from WorldGBC and the ERN.

1. Market dynamics, incentives, risks, and barriers affecting the adoption of more circular and sustainable building practices

- We reference Circular Building Coalition research around market, finance and ownership challenges for the faster adoption of circularity practices in the built environment

4. Innovative supply chains that transform waste materials into high-quality secondary construction materials and products

- Investigating the development of effective dismantling, collection and sorting infrastructures for construction waste in the WFD.
- In addition the introduction of a progressive landfill ban on non-hazardous construction and demolition waste and by-products would be an effective way to drive the reuse and recycling of construction materials.
- Development of new value chains and infrastructure for reused buildings and materials

Research and Innovation component of the NEB facility

Focus area 3: 'Innovative funding and new business models for the built environment'

We found opportunities to contribute to multiple questions in this section and suggest research topics, linked to previous circularity recommendations and work from WorldGBC and the ERN.

6. Innovative policy and regulatory frameworks to support and incentivize sustainable, circular and regenerative built environment

- Capacity building at the national level for secondary material markets
- Establishment of life-cycle GWP reporting and limit values in line with the revised EPBD, especially in countries less advanced in this area.

7. Standards, metrics and indicators to measure the impact of circular and regenerative approaches

- EU-wide harmonisation of:
 - Circularity calculation methods for accounting of recycled and reused materials
 - WLC reporting and target setting (cites 2023 WorldGBC policy briefing)

Roll-out component of the NEB facility

This section focusses on what areas could be scaled up and deployed in terms of innovative solutions in the sector

1. Renovation and repurposing of the built environment (building and spaces)

- Focus on effective implementation of the EPBD
- National policy models to drive renovation such as:
 - MEPS (reflecting Manifesto language)
 - Accelerating replacement of fossil fuel heating systems

8. Skilling and re-skilling of workers in the construction ecosystem for the sustainable transformation of neighbourhoods using the NEB Academy hubs

- Upskilling the EU construction workforce in areas such as:
 - Deep renovation
 - Whole Life Carbon reporting
 - Use of secondary materials on construction sites
- Circular Buildings Coalition research on labour shortages in delivering circular solutions

NEB facility consultation next steps

We will circulate a PDF of our response for your comments and feedback next Monday 12th August

We will give you 7 days to review before recirculating a final draft for red flag review during w/c 19 August

National policy updates

Close and next steps